



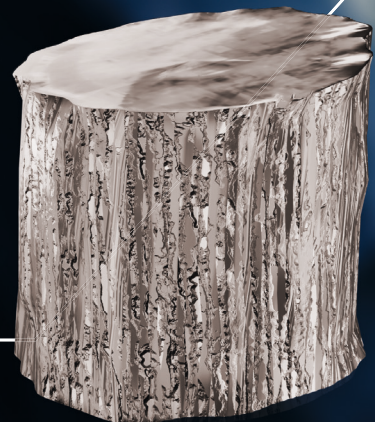
KRAMPE HAREX®

KNOW WHY.

STEEL CUT WIRE SHOT

BLASTEX® CS

PERFECTLY TAILORED.
FOR SUPERIOR RESULTS.



GOOD REASONS FOR BLASTEX® CS



LONGER SERVICE LIFE & LOW CONSUMPTION

Significantly longer service life compared to other blasting media such as cast steel, corundum, or cast iron shot. The cut wire retains its shape and hardness over many cycles, meaning that it needs to be refilled less often. Result: reduced blasting media consumption and lower costs per blasting process.



PRICE STABILITY

No volatile raw material surcharges (such as scrap or energy cost surcharges for cast material) affect the price – BLASTEX® CS therefore offers greater price certainty. The longer service life also reduces ongoing procurement costs (in some cases more than 50% less consumption compared to other blasting media).



MINIMAL DUST GENERATION

BLASTEX® CS is tough and break-resistant and does not immediately burst into fine particles during blasting. This results in less dust in the blasting cabinet – the working environment remains cleaner, visibility is better, and filter systems are relieved. In comparison, brittle cast steel generates significantly more dust due to its breakdown into small particles.



CONSISTENT SURFACE QUALITY

Thanks to its homogeneous structure and uniform grain shape, wire grain ensures a more consistent blasting pattern than less homogeneous blasting media. The surface roughness remains more constant, which is ideal for process-sensitive applications (such as before painting or coating).



QUALITY & INNOVATION

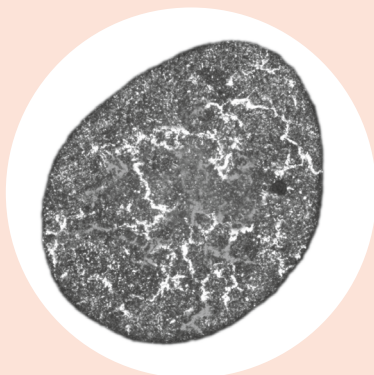
Modern machinery, trained specialists, and the KrampeHarex Technology Center underscore our commitment to precision and quality.



COMPARISON OF BLASTEX® CS STRUCTURES

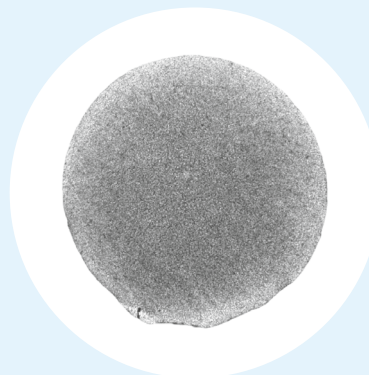
The use of BLASTEX® CS reduces the risk of breakage, extends service life, and ensures consistent blasting quality. BLASTEX® CS thus offers a safe and economical alternative for reliable use in the blasting process.

Cast iron



Significantly more porous structure. Less homogeneous. Cavities act as pre-determined breaking points when the abrasive is used.

BLASTEX® CS

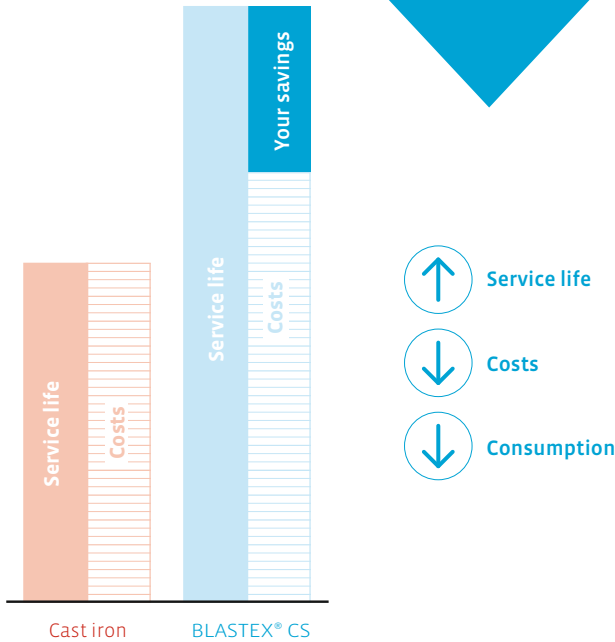


Homogeneous and robust thanks to its drawn structure. Wears down during the blasting process.

KNOW WHY YOU ARE SAVING MONEY

BLASTEX® CS outperforms cast steel LC, corundum, and cast steel HC thanks to its longer service life and significantly reduced consumption. The durability is noticeably increased, which means that fewer refilling is necessary. At the same time, the costs per square meter are significantly reduced. BLASTEX® CS thus offers an economical, reliable solution for efficient blasting processes.

	BLASTEX® CS	Cast iron LC	Cast iron HC	Corundum
Durability	++++	++	+	+
Dust exposure	+	++	++	++++
Surface	++++	++	++	++
Intensity	++++	++	++++	++
Process stability	++++	++	++	+
Cost advantage	++++	++	++	+



CHEMICAL ANALYSIS

- > Carbon: 0.45 – 0.85 %
- > Manganese: max. 1.00 %
- > Silicon: 0.10 – 0.30 %
- > Sulfur: max. 0.025 %
- > Phosphorus: max. 0.025 %

PHYSICAL PROPERTIES

- > Hardness: 400 – 550 HV1 (40 – 55 HRC)
- > Weight: approx. 7.8 g/cm³
- > Bulk density: approx. 4.6 kg/l
- > Microstructure: martensite



BLASTEX® CS WIDE RANGE OF APPLICATIONS

FOR MECHANICAL
SURFACE CLEANING
AND PREPARATION WITH
**BLAST WHEELS AND
COMPRESSED AIR SYSTEMS**

PREPARATION FOR COATING

Creating an even, adhesive surface
before painting

BLASTING

Removal of casting sand residues

DEBURRING

Clean removal of burrs and sharp edges

DESCALING

Removal of scale layers

DERUSTING

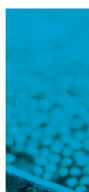
Removal of rust on steel surfaces



KRAMPE HAREX®

KNOW WHY.

MORE THAN JUST A PIECE OF WIRE KRAMPEHAREX PLUS



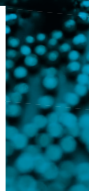
ON-SITE CONSULTING

Experts from KrampeHarex analyze the requirements and consult directly with the customer to find the optimal blasting media and the optimal settings.



BLASTING AGENT TESTS

As part of the service, the blasting agents used are tested regularly (e.g., grain distribution in the operating mixture, air separation settings) to ensure consistent quality in the process.



SYSTEM CHECK

Inspection of the customer's blasting system (blasting results, wear, turbine power consumption, etc.) and recommendations for optimization. This ensures that BLASTEX® CS is used under the best possible conditions.

THE KRAMPEHAREX ENVIRONMENTAL PLEDGE:



**100 % green electricity
in all processes**



**Resource-saving
manufacturing using
state-of-the-art technologies**



**Sustainable logistics and
recycling of all materials**

SUSTAINABILITY THROUGH RESPONSIBILITY

We produce our cut wire in Germany – using green electricity and short delivery routes. Our production facility in Hamm guarantees maximum flexibility, delivery reliability, and an active contribution to climate protection.

We focus on energy-efficient processes, recycling management, and sustainable disposal in order to protect our environment and actively shape the future.



**Certified
Sustainability**

HEADQUARTER

KrampeHarex GmbH & Co. KG
Pferdekamp 6 – 8
D-59075 Hamm

Phone +49 2381 - 977 977

Fax +49 2381 - 977 955

Internet krampeharex.com

E-mail info@krampeharex.com

CONTACT

ROBERT HÜBNER

Sales & Product manager

Mobile +49 173 7121757

E-mail robert.huebner@krampeharex.com

